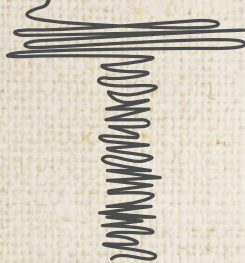


Thoughtful
Threads



CHARLES PARSONS

Est. 1915





01

INTRO



05

ASAHI BEMBERG LINING

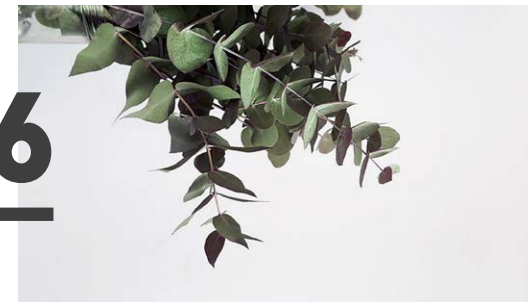
ORGANIC NATURAL
FIBRES

02



TENCEL

06



03

RECYCLED NYLON



07

CLASSIFICATIONS

RECYCLED POLYESTER

04



CONTACT

08



01



WHY THOUGHTFUL THREADS?

Charles Parsons is on a journey. We are committing to supplying a range of ethically sourced textiles from sustainable sources. This journey will be one that allows us to explore how and where we source textiles with a genuine concern for our environment and humanity. We believe we can make a difference. We hope you join us!

Thoughtful Criteria

- Must have a positive impact on our environment and improve our footprint.
- Must make a proven difference to peoples lives; farmers, workers and consumers.

BY 2050 THE OCEAN WILL CONTAIN MORE PLASTIC BY WEIGHT, THAN FISH

- 90% of the rubbish in the ocean is plastic

90%



INNOVATION

- Resourceful weeding strategies are used in organic cotton growing instead of herbicides

1000

PLASTIC CAN TAKE UP TO 1000 YEARS TO BREAKDOWN

- Although plastic bottles are recyclable, many end up in landfill



0.1%

25,000 TONS OF ORGANIC COTTON IS PRODUCED ANNUALLY

- Only 0.1% of worldwide cotton production is 'organic'

02



ORGANIC NATURAL FIBRES

Organic Cotton and **Bamboo** is grown in a way that uses methods and materials that lessen the impact on our environment. Organic cotton farmers commit to growing systems that replenish and maintain soil fertility and build biologically diverse agriculture.

By choosing organic products you are actually supporting organic farmers around the world; build soil that nurtures life on earth, protects biodiversity and protect the air and water which we all depend on.



Organic agriculture is an ecological production management system that prohibits the use of toxic and persistent chemical pesticides and fertilisers, as well as genetically modified organisms.

This system promotes and enhances biodiversity, biological cycles and biological activity, emphasising natural and biological methods which have far less impact on the environment.

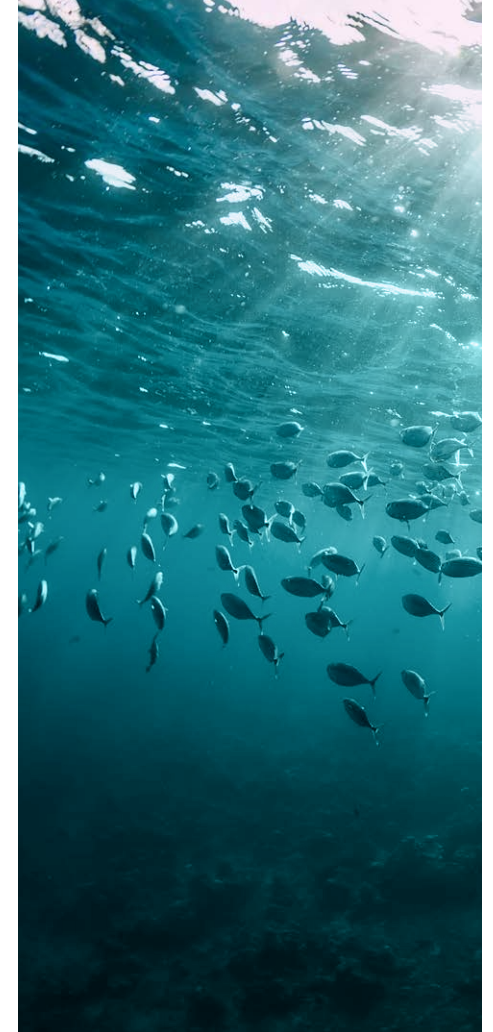


03



RECYCLED NYLON

Our **Recycled Nylon** products aim to divert waste from landfill as well as recover waste from oceans, in particular fishing nets. The recovered fishing nets are transformed and regenerated together with other nylon waste into high quality raw material.



- Creating healthier seas and recycling marine litter into high quality textiles.
- Diverting nylon waste from landfill, resulting in less soil contamination, air and water pollution.





RECYCLED POLYESTER

Recycled Polyester uses PET as the raw material, which is the same material that is used in clear plastic water bottles. Recycling PET to create fabric prevents it from going to landfill.

This process of converting PET into recycled polyester requires much less energy than in the case of normal polyester. In fact it takes 33-53% less energy.

There are two main advantages to this process:

- Using more recycled polyester reduces our dependence on petroleum as a raw material.
- Diverting PET bottles for this process reduces landfill, thus less soil contamination, air and water pollution.



REPREVE RECYCLED THREAD

Recycled polyester doesn't require agricultural land, nor does it consume gallons of water like cotton does.

Complete your sustainability story utilising our range of A&E Apparel recycled polyester thread, using

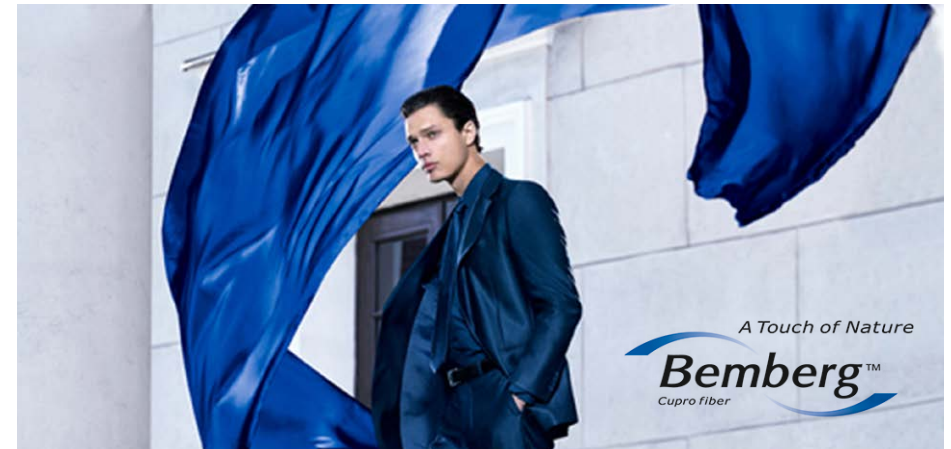
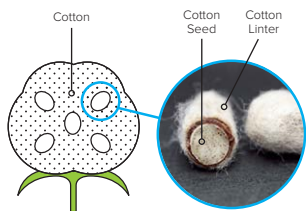
REPREVE recycled fibre from post-consumer plastic water bottles.





ASAHI BEMBERG LINING

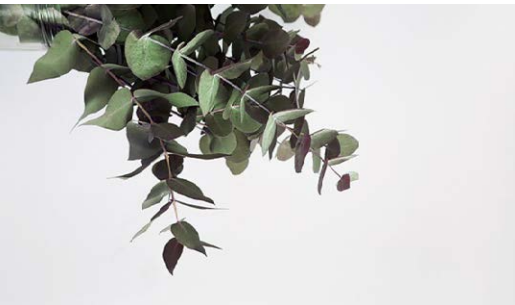
Bemberg Cupro is a biodegradable fabric produced using a renewable resource. The Bemberg is produced from the natural fibre that would usually be discarded - the 'lint' that envelops and protects the cotton seed. The cotton plant is a renewable resource, as it grows it absorbs CO2 from the air, helping to lower the atmospheric concentration.



Bemberg is biodegradable, decomposing to half its original weight after two months in soil under summer conditions. As a pure cellulose, it naturally burns clean under incineration, with extremely low emissions of harmful gas.

- Waste recycling at the Bemberg plant has risen to almost 100%.
- Bemberg carries the Oeko Tex 100 certification.





TENCEL

Tencel is made from wood pulp from sustainable forest plantations. Made from Eucalyptus trees, it does not require pesticides or irrigation, therefore water consumption is 10 - 20 times lower than with cotton. Eucalyptus can grow on land unsuitable for farming. In contrast, cotton uses productive agricultural land, which means it is competing with food production.

- Tencel carries the Oeko Tex 100 certification.
- Tencel is breathable, softer with a unique moisture absorption ability.
- After the garments lifecycle, Tencel is biodegradable and can be upcycled.



Tencel is eco-friendly and economic through the production process. It uses a closed loop system in which 99.5% of the chemicals and solvents used in the process to break down the wood pulp are recovered and recycled with minimal waste and very low emissions.





CLASSIFICATIONS

We have compiled a handy glossary of essential environmental terms that affect all aspects of the textile industry. Our mission is to empower conscious consumption through education. With this glossary, we hope to introduce and clarify common terms that will help you on your journey.

THOUGHTFUL CONSUMER

A thoughtful consumer is someone who is aware of the negative effects of purchasing items that are not produced sustainably or ethically. For this reason they choose to purchase items that adhere to certain guidelines of sustainability and avoid contributing to mass production and wasteful or harmful manufacture processes.

CARBON FOOTPRINT

The amount of carbon dioxide and other carbon compounds emitted due to the consumption of fossil fuels by a particular person.

GLOBAL WARMING

An increase in the temperature of the Earth's atmosphere due to the greenhouse effect and its effects on people and the environment.

CLOSED LOOP

Closed Loop Production is a form of production designed to eliminate all waste. Loops may be closed, for instance, by recovery, re-use or recycling. The term Closed Loop Design refers to a product being designed to have another function after its primary use, thus eliminating all waste. The used product's output becomes the input of a new product or function.

SUSTAINABILITY

Sustainable products provide environmental, social or economic benefits while protecting health, welfare and environment over their full commercial cycle, from the extraction of raw materials to final disposition.

SOCIAL RESPONSIBILITY

Social responsibility suggests we should live our life with an awareness towards the interests and well-being of society as a whole. We need to take on a social responsibility for our own choices, how we spend our money and how we take care of what we already own. This encourages us as consumers to be mindful of what we possess and its effect on other people and the environment.

BIODEGRADABLE

A substance or object capable of being broken down rapidly by the action of micro-organisms, to be reabsorbed into the ecosystem. Biodegradable substances include wood, cotton, wool and manufactured products based on natural material.



PLEASE CONTACT YOUR SALES REPRESENTATIVE

CHARLES PARSONS

• **Australia**

Toll Free 1300 301 894

apparel@charlesparsons.com.au

• **New Zealand**

Free Phone 0508 88 44 11

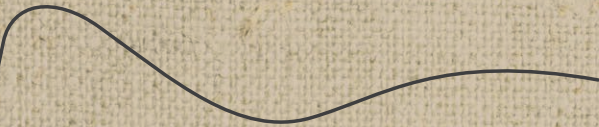
apparel@charlesparsons.co.nz

www.charlesparsons.com

CHARLES PARSONS
Est. 1915



This book has been designed as a digital resource. If printing, we recommend using vegetable inks and paper from responsible sources.



Thoughtful
Threads

A stylized graphic of a thread spool or bobbin, positioned below the text "Thoughtful Threads". It consists of a horizontal base with several vertical lines extending upwards, suggesting the threads of a spool.

CHARLES PARSONS

Est. 1915